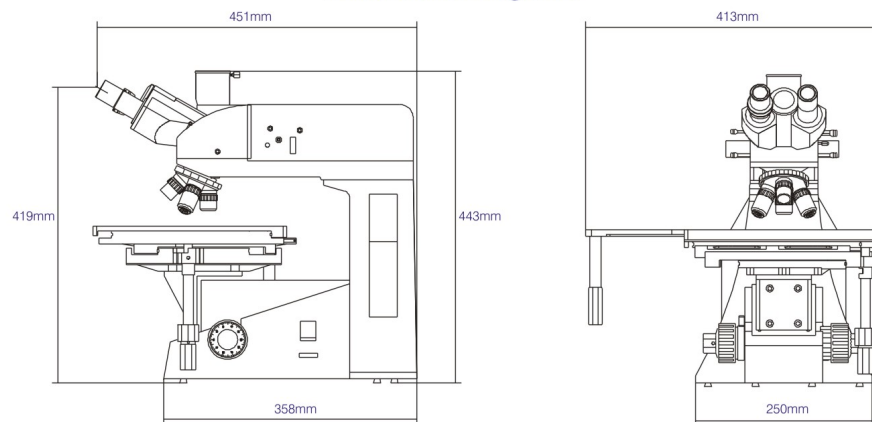
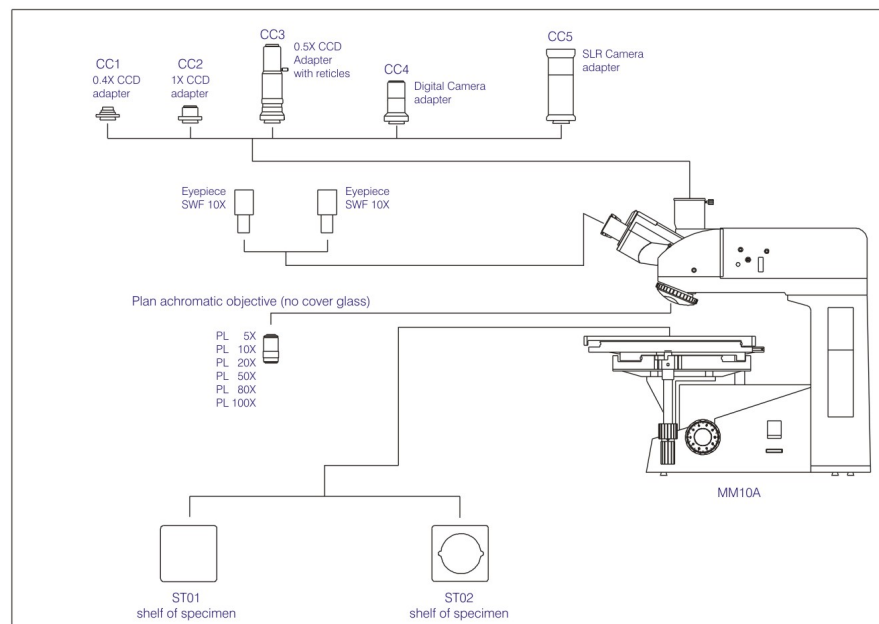


Dimensional Diagrams



System Diagrams



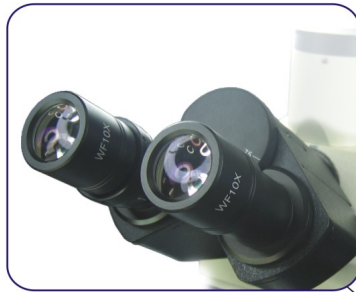
RaxVision®
Quality Product For Professionals

MM10A

HIGH POWER METALLURGICAL MICROSCOPE



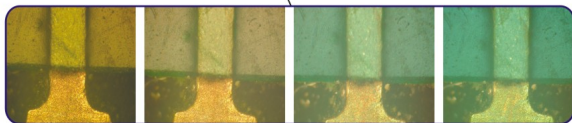
MM10A Trinocular reflected light metallurgical microscope is the most cost effective microscope with high contrast optical system, suitable for the microscopic observation of surfaces and non-transparent object. It is equipped with large moving range stage, vertical illumination, plan achromatic objectives and wide field eyepieces. It is the ideal instrument in research work in metallography, mineralogy, precision engineering, electronics etc. It is also suitable for scientific research, teaching and demonstration in the colleges and factories.



- New high-eyepoint eyepiece features making it easier to view images as well as reducing eye-strain
- Super wide field eyepiece : WF-10X/18



- Various type of colours filter



- Sample images of adjustable brightness with polarizer

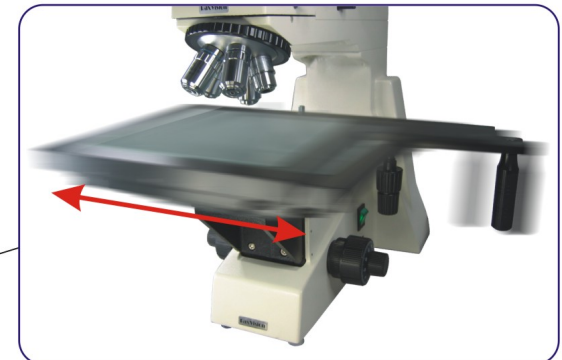


SPECIFICATIONS:

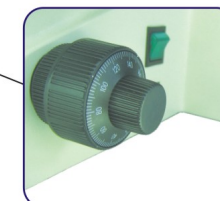
- Multi-coated high contrast optical system
- All lenses are fully anti-fungus coated
- Compensation free trinocular head (inclined 30 degree) including analyzer lens
- Quintuple objective lens nosepiece
- Plan achromatic objective lens magnification/numerical aperture/working distance
- PL5X/0.12/18.3mm
- PL10X/0.25/8.9mm
- PL20X/0.40/8.7mm
- PL50X/0.70(Spring)/2.02mm
- PL80X/0.80(Spring)/0.96mm



- Video & photo adapters with the 3rd observation tube of the trinocular head with enable the use of video and photo microscopy
- C-mount coupling or photo tube



- Right hand drive mechanism X/Y large moving stage to ensure smooth movement in X/Y and diagonal axis with stopper
- Enable fast moving feature



- Strain-free, ergonomic design focusing knob for the operator's hand to rest comfortably on the desk in a more relaxed and natural posture
- Coaxial coarse and fine focusing mechanism with tension adjustment and focus stopper

- High-eyepoint eyepiece WF10x (F.N.18)
- Size: 274mm x 274mm, can be moved quickly, moving range: 203mm x 203mm
- 0.4X CCD camera adapter
- Vertical illumination 6V 20W halogen lamp, adjustable brightness with polarizer
- * *Optional:* Size: 250mm x 230mm, can be moved quickly, moving range: 153mm x 153mm
- * *Optional:* Digital camera/CCD video camera accessories
- * *Optional:* PL100X dry objective lens