

RaxVision

INVERTED METALLURGICAL RESEARCH MICROSCOPE



IMS 100

Quality Product For Professionals

RaxVision

- With infinitive Optical system, providing excellent optical functions
- With the features of stable stand structure, advanced stage design and comfortable operation. It is widely used in Institute and Laboratory to observe and identify the structure of various metal and alloy

VIEWING HEAD	Trinocular Head inclined at 30°, inter		●
EYEPIECE	High point. Extra wide field eyepiece EW10X/20		●
OBJECTIVE	Plan Achromatic Objective	4X/0.1/∞/- WD25.4mm	●
		10X/0.25/∞/- WD11.0mm	●
		20X/0.40/∞/- WD6.0mm	●
		40X/0.60/∞/- WD3.7mm	●
		80X/0.90/∞/- WD0.2mm	○
NOSEPIECE	Quintuple Nosepiece		●
STAGE	Plain Stage 160x250mm		●
	Attachable mechanical stage , X-Y coaxial control, moving range 120 x 78mm		○
	Auxiliary stage 70 x 180mm		○
FOCUSING	Coaxial coarse and fine adjustment, Vertical objective movement. Coarse stroke : 37.7mm per rotation. Fine stroke : 0.2mm per rotation		●
KOHLER ILLUMINATION	Halogen lamp 6V30W		●
FILTER	Blue, Yellow, Green and Ground glass		●
POLARIZATION ATTACHMENT			●
PHOTO ATTACHMENT	Photo attachment		○
VIDEO ADAPTER	Video Adapter with C mount		○

Remarks : ● Standard ○ Optional accesories

RaxVision

Wide Range Of High Quality Accessories



Trinocular Viewing Head



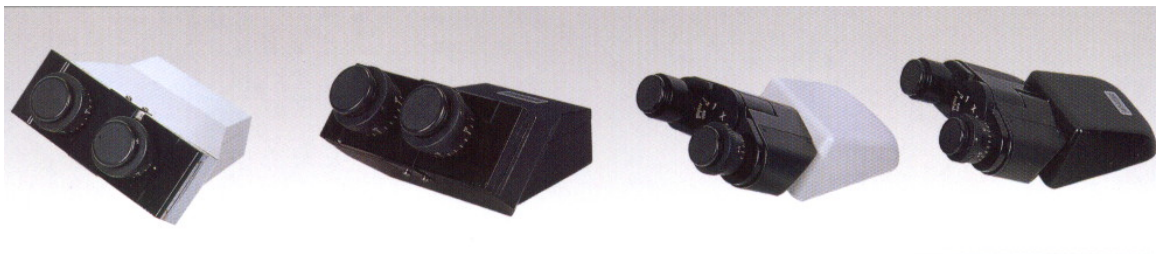
Wide Field Eyepiece



Hygens Eyepiece



Infinite Objectives



Binocular Viewing Head



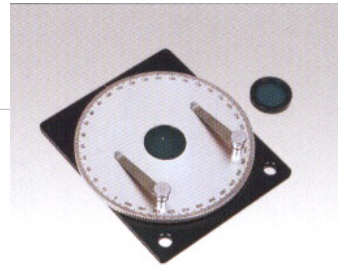
Nosepieces for Objectives

Quality Product For Professionals

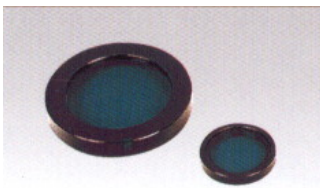
RaxVision



Temperature Controlled Stage



Simple Polarization Stage



Simple Polarization Set



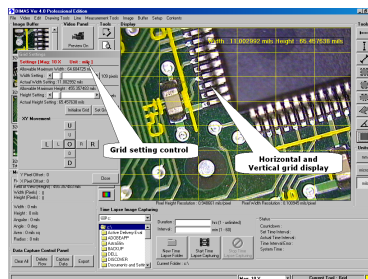
Photo Attachment



Video Adapter with c-Mount



Fiberoptic Light Source



DIMAS Imaging System



CCD Camera

Represented By :



Quality Product For Professionals