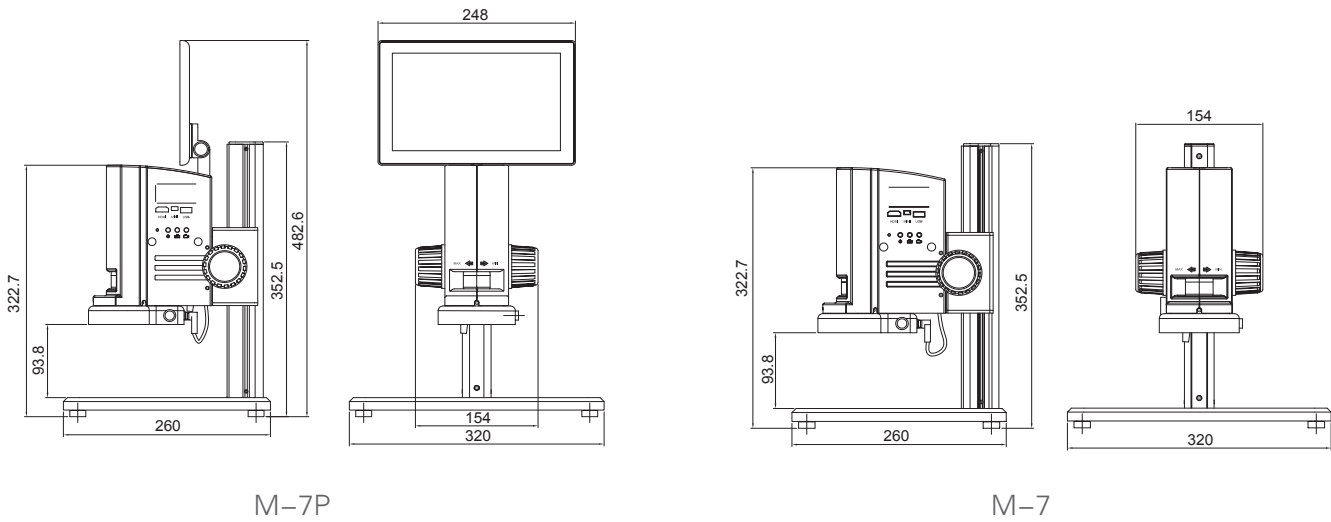


Specification

Model	M-7P	M-7
Body	IPS10 inch Touch-screen, -5~15 degree adjustable.	
	Zoom lens 0.7X~5X; built-in camera with HDR image, OSD manual, 1/3" COMS, 4.0 mega pixels, 16G memory; HDMI/USB2.0/Mini USB output; support for SD card/wireless keyboard and mouse.	
Main objectives	1X main objective, WD=105mm	
	1.4X main objective, WD=100mm	
	0.5X main objective, WD=170mm	
Illumination	LED ring lamp with 56 bulbs, intensity adjustable, color temperature 5000-5500K	
	LED ring lamp with two circles, intensity separately adjustable, color temperature 5000-5500K	
Base	Big plan base, lifting range 225mm	
Accessories	1.5m USB cable; 5m HDMI cable	

Dimension: mm



RaxVision

M-7 Series
Digital Microscope



One-piece design, without a tangled mess of wires, save space and easy to carry.



One-piece design

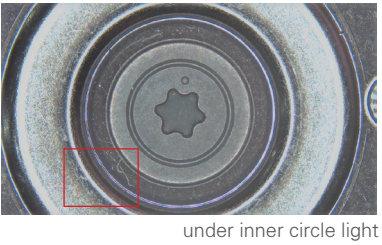
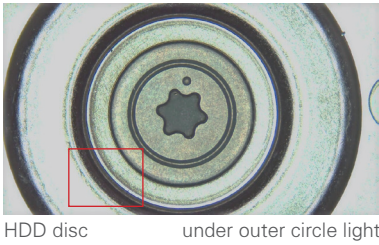
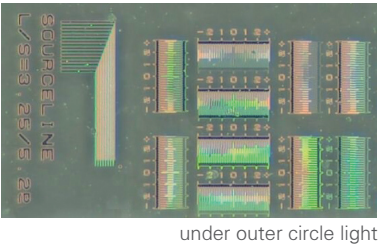
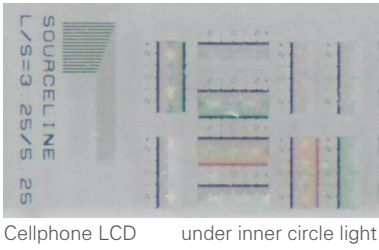
Integrated zoom optical module with high definition camera, M-7 embodies the beauty of compact. Display, camera and ring lamp with one power supply, avoid the mess of mixed wires.

Multiplex signals collection

M-7 with multi-channel signals transmission, support for USB/HDMI output at the same band without interference on each other.

LED ring lamp with two circle bulbs

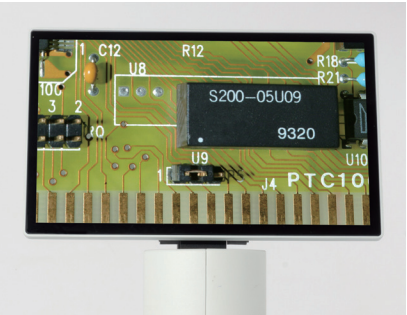
Separated switches for intensity control of inner and outer circle light. Outer circle as oblique illumination, is available to present more details. Inner circle as near coaxial light, improve the accuracy and reproducibility of visual expression.



Real Shot

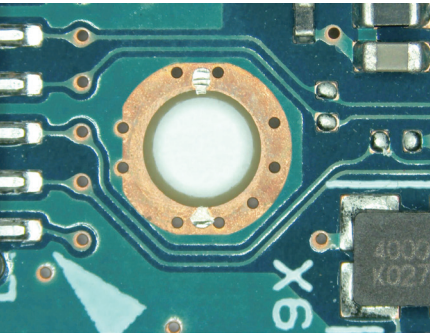
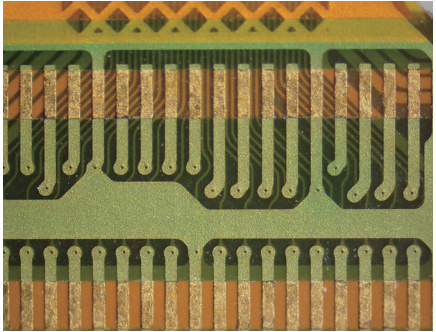
High definition camera

Built-in CMOS camera with 4.0 mega pixels, restore the real color of image with high sharpness and contrast. The frame rate of full HD reaches to 30fps, simultaneously satisfy the demand of speed and clarity.



Adjustable zoom lens

M-7 with zoom lens 0.7X~5X, magnification 7:1, working with big plan base, focusing range 225mm, is able to inspect large and different samples, working distance 170mm max.



Plant morphology

FPCB

Fiber

PCB